

Weekly Publication of



**Cotton  
Association  
of India**

# COTTON STATISTICS & NEWS

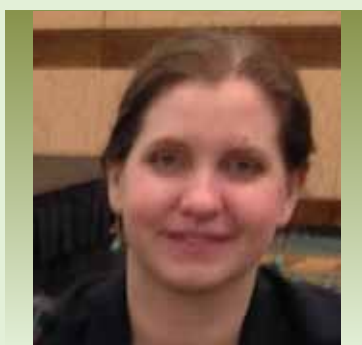
Edited & Published by Amar Singh

2018-19 • No. 12 • 19<sup>th</sup> June, 2018 Published every Tuesday

Cotton Exchange Building, 2nd Floor, Cotton Green, Mumbai - 400 033  
Phone: 3006 3400 Fax: 2370 0337 Email: cai@caionline.in  
www.caionline.in

## Cotton Sector Labour

*Rebecca Pandolph is currently the Chief of the Statistics Section at the International Coffee Organization. Previously, she worked as Statistician at the International Cotton Advisory Committee from 2013 through 2017. At the International Cotton Advisory Committee, she was responsible for maintaining the statistics for global supply and demand of cotton, editing and writing articles for the bimonthly publication, Cotton: Review of the World Situation, and gave presentations on the world cotton sector to various stakeholders including member governments and international organizations like the World Trade Organization. She also served as a Senior International Trade Analyst with the U.S. Department of Commerce where she analysed data for anti-dumping duty cases.*



### GUEST COLUMN

**Rebecca Pandolph**  
*Former Statistician,  
International Cotton Advisory Committee*

The cotton sector provides employment to a significant number of people around the world and at various stages of the cotton value chain. Examining cotton sector employment in a given country helps to assess the size and importance of the cotton sector in that country's economy and employment.

### Cotton Production Practices and Impact on Labour Needs

The number of people employed at different stages of cotton production depends in large part

on the degree of mechanisation of the farm. In the International Cotton Advisory Committee's (ICAC) 2014 production practices publication, 21 out of 36 responding countries harvested cotton entirely by hand with the majority of cotton harvested by hand in three countries.<sup>1</sup> While many smallholders are family run, hired labour (formal and casual) is used at different stages, particularly during harvesting, these workers are often seasonal. Thus, cotton is often not the only source of employment or income for this group of people.

### Cotton Employment Data

#### Data Availability and Sources

Measuring global cotton output is easier than estimating the number of farms and growers behind it. Cotton area and production

are often routinely assessed in many producing countries in order to evaluate the quantity of fibre available for local consumption and exports. However, the numbers of farms and people involved in producing cotton are not frequently assessed. There is a large variation amongst cotton producing countries: a few countries conduct surveys and estimate the number of cotton farms and growers every year, some do so every few years, and many others do so infrequently or not

<sup>1</sup> Cotton Production Practices. International Cotton Advisory Committee.

at all. Most countries that conduct agricultural censuses every few years count agricultural holdings. Agricultural holdings are comprised of two distinct types: household-based holdings (such as family farming) and non-household holdings (commercial/plantations). However, farms and growers are rarely counted depending on their type of agricultural production. The issue is further complicated by the fact that cotton is grown as an annual crop, and farmers can easily switch in and out of it every year. Farm workers may be seasonal or work with other crops so that they are not entirely supported by cotton. Lastly, comparisons across countries or aggregation can be difficult as data are sparse, may not cover the same time period or may use differing definitions.

Given the difficulty in obtaining accurate data, the employment numbers presented in this chapter are “best estimates”. Additionally, the data focuses on the number of cotton growers in a particular country as this was the most readily available data for the largest number of countries. In cases where there is no information, a ratio of total growers to total cotton hectares was derived from countries with data based on the lower estimate of the country’s average cotton area by farm. This ratio was then applied to the cotton area for the countries with no cotton grower data. The actual ratios applied are provided in Table 1.

### Country and Region-specific Analysis

Cotton is produced in around 60 countries on all continents except Antarctica. There are between 36 and 62 million active cotton farmers among 60 cotton producing countries (Table 1). As might be expected, the larger the area and the smaller the average farm size, the more cotton growers within a country. China had the largest number of cotton producers with anywhere from 24-46 million farmers growing cotton in a year. The average farm size in China is .2 hectares (.5 acres). After China, the countries with the largest numbers of cotton farmers are India (5.8 to 7.7 million) and Pakistan (1.3 to 1.8 million), where the average farm size is 1.7 hectares (4.2 acres) and 2 hectares (5 acres), respectively. Then come Myanmar (503,600), Uzbekistan (around 440,000 to 445,000), Tanzania (390,000), Burkina Faso (325,000), Zambia (250,000), Kazakhstan (250,000), Ethiopia (240,000), Chad (234,100), Cameroon (206,500), Malawi (200,000 to 483,000), Mozambique (200,000 to 250,000), Zimbabwe (200,000 to 250,000), Turkmenistan (185,000 to 190,500), Mali (162,800), Egypt (150,000), Nigeria

(145,000 to 200,000), Benin (145,000 to 190,000), Côte d’Ivoire (113,500), Bangladesh (107,000), Togo (103,000) and Uganda (100,000). Other countries have fewer than 100,000 cotton growers each.

There are large variations in terms of average cotton farm area across regions and the number of growers that produce cotton (Tables 2 and 3). The total number of cotton growers in Asia ranges between 32 million people and 56 million people, the majority of which are located in China. While China plants around 14% of the world’s cotton, its farmers represent 70% of global cotton growers. This is due in large part to the fact that the average farm size in China is significantly smaller than in any other country. However, its share is likely to decrease over time as more cotton area has shifted to the northwest province, Xinjiang, where farm size tends to be larger and farms are more mechanised. In contrast, while cotton area in North America accounts for 11% of the world total, its share of world cotton growers is just 0.2%, which is because most of the cotton is grown in the United States where the average farm size ranges between 170 and 228 hectares (420 and 563 acres).

Nine countries have data for total cotton employment, which includes farmers and their families involved in production activities, those hired by growers, and those employed in cotton-related industries. Based on this data, one can see that cotton farming generates significant employment in addition to farmers themselves. For example, total employment in Australia’s cotton sector is estimated at around 10,000 people, of which 1,200 to 1,500 are growers. For India, which tends to rely more on manual labour, the total employment is estimated at 50.8 million people, while the number of farmers range between 5.8 and 7.7 million. Applying ratios of employment per hectare to countries of similar economic structure and labour practices, total employment in cotton production worldwide is estimated at between 150 million to 190 million people. These estimates do not represent full time/year-round employment. Rather they represent estimates of the number of people each year who spend time performing cotton production services and earning some of their annual cash incomes from these activities. Between 2% and 3% of the world’s population earns some income each year from cotton production activities.

**Table 1: Estimated Number of Cotton Growers by Country**

Country	Average Cotton Area by Farm		Average Annual Cotton Area	Number of Cotton Growers		Total Employment (growers and cotton-related industries)
	Lower Estimate	Upper Estimate	2010/11-2015/16	Lower Estimate	Upper Estimate	
	Ha	Ha	Ha			
<b>NORTH AMERICA</b>						
Cuba*	2.0	2.0	4,047	2,050	2,700	
Ecuador*	2.0	2.0	1,234	600	825	
Mexico*	9.6	9.6	148,914	50,600	50,600	
Nicaragua*	2.0	2.0	1,777	750	1,000	
United States	170.0	228.0	3,672,420	12,700	18,600	200,000
<b>SOUTH AMERICA</b>						
Argentina	21.5	23.2	462,965	25,600	25,600	
Bolivia*	2.0	2.0	4,807	2,400	3,200	
Brazil	138.2	3,300.0	1,123,417	1,240	1,240	50,000
Colombia	6.4	6.4	35,550	2,032	2,032	12,000 to 60,000
Paraguay	1.4	1.4	26,508	12,000	12,000	
Peru*	5.2	5.4	38,270	13,000	13,100	
Venezuela*	2.0	2.0	15,262	7,500	10,000	
<b>EUROPE</b>						
Greece	3.5	3.8	264,895	50,000	57,100	
Spain	8.3	9.5	67,448	5,900	6,700	
<b>NORTH AFRICA</b>						
Egypt	1.6	2.5	151,088	150,000	150,000	500,000 to 1 million
Sudan	0.3	0.3	69,212	11,200	15,000	
<b>WEST AFRICA</b>						
Benin*	1.1	1.7	286,131	143,500	188,000	
Burkina Faso	1.2	6.4	560,410	325,000	325,000	1,000,000
Cameroon	0.7	1.0	190,363	206,491	206,491	
Centr. Afr. Rep.*	1.0	1.0	34,984	17,500	23,000	
Chad	0.5	1.0	220,701	234,128	234,128	380,000
Cote d'Ivoire	0.9	1.0	332,514	113,532	113,532	
Ghana	0.9	1.8	14,333	33,000	33,000	
Guinea*	1.0	1.0	13,132	6,500	8,600	
Mali	2.1	2.7	489,393	162,755	162,755	
Niger*	1.0	1.0	4,690	2,400	3,100	
Nigeria	1.5	2.0	291,533	150,000	150,000	
Senegal	1.3	1.3	29,218	33,605	33,605	
Togo	0.8	0.9	105,812	103,161	103,161	
<b>EASTERN AND SOUTHERN AFRICA</b>						
Angola*	1.0	1.0	2,929	1,450	1,950	
Ethiopia	0.4	0.4	106,237	240,000	240,000	
Kenya	0.2	0.2	32,029	39,000	200,000	
Malawi	0.5	0.5	162,980	200,000	483,000	
Mozambique	0.5	0.8	141,215	200,000	250,000	1,500,000
South Africa	20.1	20.1	10,118	5,315	5,315	
Tanzania	0.9	1.1	412,833	389,761	389,761	
Uganda	0.5	0.6	72,019	100,000	100,000	
Zambia	1.0	1.0	181,541	250,000	250,000	
Zimbabwe	1.4	1.4	286,833	200,000	250,000	
<b>MIDDLE EAST</b>						
Afghanistan*	3.0	3.0	34,217	15,100	15,400	
Iran	3.0	3.2	94,465	32,077	32,077	
Iraq*	3.0	3.0	19,135	6,450	6,600	
Israel	38.7	38.7	7,168	91	91	
Syria*	3.0	3.0	115,184	39,000	39,500	
Turkey	2.4	4.0	476,030	25,850	25,850	
<b>AUSTRALIA</b>						
Australia	437.0	437.0	414,013	1,200	1,500	10,000
<b>ASIA</b>						
Bangladesh	0.4	0.4	35,393	107,000	107,000	
China	0.2	0.2	4,669,160	24,000,000	46,000,000	
India	1.7	1.8	12,012,667	5,800,000	7,700,000	50,800,000
Indonesia*	1.0	1.0	8,874	4,400	5,750	
Myanmar	0.7	0.7	314,139	503,566	503,566	
Pakistan	2.0	2.0	2,843,877	1,300,000	1,837,000	
Thailand	0.5	0.5	2,293	5,000	5,000	
Vietnam	0.6	0.6	6,150	10,000	10,000	
<b>CENTRAL ASIA</b>						
Azerbaijan*	5.0	5.0	27,883	9,400	9,600	
Kazakhstan	0.3	0.3	135,517	250,000	250,000	
Kyrgyzstan	5.0	5.0	26,020	70,000	70,000	
Tajikistan*	5.0	5.0	181,792	61,500	62,300	
Turkmenistan*	5.0	5.0	556,667	185,000	190,500	
Uzbekistan*	6.4	6.4	1,300,345	440,000	445,000	
TOTAL			33,350,749	36,357,533	61,465,843	
TOTAL WORLD LESS CHINA			28,681,590	12,357,533	15,465,843	

\*The total number farmers was divided by the average area for 2010/11-2015/16 for countries with known farmer numbers to calculate a farmer per hectare ratio as enumerated in the table below.

Farm Size	Average Employment per Hectare	Average Minimum Farm Size	
		Under 1 hectare	3.64
		1 hectare to less than 3 hectares	0.50
		3 hectares but less than 10 hectares	0.34

**Table 2: Regional Estimates**

REGION	Average Cotton Area by Farm		Average Annual Cotton Area	Average Number of Cotton Growers	
	Lower Estimate	Upper Estimate	2010/11-2015/16 Ha	Lower Estimate	Upper Estimate
NORTH AMERICA	66,700	73,725	3,828,392	13,340	14,745
SOUTH AMERICA	63,772	67,172	1,706,778	9,110	9,596
EUROPE	55,900	63,800	332,344	27,950	31,900
NORTH AFRICA	161,200	165,000	220,300	80,600	82,500
WEST AFRICA	1,531,572	1,584,372	2,573,213	117,813	121,875
EASTERN AND SOUTHERN AFRICA	1,625,526	2,170,026	1,408,735	162,553	217,003
MIDDLE EAST	118,568	119,518	746,200	19,761	19,920
AUSTRALIA	1,200	1,500	414,013	1,200	1,500
ASIA	31,729,966	56,168,316	19,892,552	3,966,246	7,021,040
CENTRAL ASIA	1,015,900	1,027,400	2,228,223	169,317	171,233

**Table 3: Estimated Number of Cotton Growers by Country Share of the World Total**

Country	Number of Cotton Growers		Number of Cotton Growers	Harvested Cotton Area
	Lower Estimate	Upper Estimate	Average	
	% of World Total	% of World Total	% of World Total	% of World Total
<b>NORTH AMERICA</b>				
Cuba	0.0%	0.0%	0.0%	0.0%
Ecuador	0.0%	0.0%	0.0%	0.0%
Mexico	0.1%	0.1%	0.1%	0.4%
Nicaragua	0.0%	0.0%	0.0%	0.0%
United States	0.0%	0.0%	0.0%	11.0%
<b>SOUTH AMERICA</b>				
Argentina	0.1%	0.0%	0.1%	1.4%
Bolivia	0.0%	0.0%	0.0%	0.0%
Brazil	0.0%	0.0%	0.0%	3.4%
Colombia	0.0%	0.0%	0.0%	0.1%
Paraguay	0.0%	0.0%	0.0%	0.1%
Peru	0.0%	0.0%	0.0%	0.1%
Venezuela	0.0%	0.0%	0.0%	0.0%
<b>EUROPE</b>				
Greece	0.1%	0.1%	0.1%	0.8%
Spain	0.0%	0.0%	0.0%	0.2%
<b>NORTH AFRICA</b>				
Egypt	0.4%	0.2%	0.3%	0.5%
Sudan	0.0%	0.0%	0.0%	0.2%
<b>WEST AFRICA</b>				
Benin	0.4%	0.3%	0.4%	0.9%
Burkina Faso	0.9%	0.5%	0.7%	1.7%
Cameroon	0.6%	0.3%	0.5%	0.6%
Centr. Afr. Rep.	0.0%	0.0%	0.0%	0.1%
Chad	0.6%	0.4%	0.5%	0.7%
Cote d'Ivoire	0.3%	0.2%	0.2%	1.0%
Ghana	0.1%	0.1%	0.1%	0.0%
Guinea	0.0%	0.0%	0.0%	0.0%
Mali	0.4%	0.3%	0.4%	1.5%
Niger	0.0%	0.0%	0.0%	0.0%
Nigeria	0.4%	0.2%	0.3%	0.9%
Senegal	0.1%	0.1%	0.1%	0.1%
Togo	0.3%	0.2%	0.2%	0.3%
<b>EASTERN AND SOUTHERN AFRICA</b>				
Angola	0.0%	0.0%	0.0%	0.0%
Ethiopia	0.7%	0.4%	0.5%	0.3%
Kenya	0.1%	0.3%	0.2%	0.1%
Malawi	0.6%	0.8%	0.7%	0.5%
Mozambique	0.6%	0.4%	0.5%	0.4%
South Africa	0.0%	0.0%	0.0%	0.0%
Tanzania	1.1%	0.6%	0.9%	1.2%
Uganda	0.3%	0.2%	0.2%	0.2%
Zambia	0.7%	0.4%	0.5%	0.5%
Zimbabwe	0.6%	0.4%	0.5%	0.9%
<b>MIDDLE EAST</b>				
Afghanistan	0.0%	0.0%	0.0%	0.1%
Iran	0.1%	0.1%	0.1%	0.3%
Iraq	0.0%	0.0%	0.0%	0.1%
Israel	0.0%	0.0%	0.0%	0.0%
Syria	0.1%	0.1%	0.1%	0.3%
Turkey	0.1%	0.0%	0.1%	1.4%

AUSTRALIA				
Australia	0.0%	0.0%	0.0%	1.2%
ASIA				
Bangladesh	0.3%	0.2%	0.2%	0.1%
China	66.0%	74.8%	70.4%	14.0%
India	16.0%	12.5%	14.2%	36.0%
Indonesia	0.0%	0.0%	0.0%	0.0%
Myanmar	1.4%	0.8%	1.1%	0.9%
Pakistan	3.6%	3.0%	3.3%	8.5%
Thailand	0.0%	0.0%	0.0%	0.0%
Vietnam	0.0%	0.0%	0.0%	0.0%
CENTRAL ASIA				
Azerbaijan	0.0%	0.0%	0.0%	0.1%
Kazakhstan	0.7%	0.4%	0.5%	0.4%
Kyrgyzstan	0.2%	0.1%	0.2%	0.1%
Tajikistan	0.2%	0.1%	0.1%	0.5%
Turkmenistan	0.5%	0.3%	0.4%	1.7%
Uzbekistan	1.2%	0.7%	1.0%	3.9%
TOTAL	100%	100%	100%	100%
TOTAL WORLD LESS CHINA	34%	25%	29.6%	86%
REGION				
Azerbaijan	0.0%	0.0%	0.0%	0.1%
Kazakhstan	0.7%	0.4%	0.5%	0.4%
Kyrgyzstan	0.2%	0.1%	0.2%	0.1%
Tajikistan	0.2%	0.1%	0.1%	0.5%
Turkmenistan	0.5%	0.3%	0.4%	1.7%
Uzbekistan	1.2%	0.7%	1.0%	3.9%
Azerbaijan	0.0%	0.0%	0.0%	0.1%
Kazakhstan	0.7%	0.4%	0.5%	0.4%
Kyrgyzstan	0.2%	0.1%	0.2%	0.1%
Tajikistan	0.2%	0.1%	0.1%	0.5%
Turkmenistan	0.5%	0.3%	0.4%	1.7%
Uzbekistan	1.2%	0.7%	1.0%	3.9%

## References

"Agricultural Wage Workers: the Poorest of the Rural Poor." International Labour Organization. September, 23, 1996. [http://www.ilo.org/global/about-the-ilo/newsroom/news/WCMS\\_008067/lang--en/index.htm](http://www.ilo.org/global/about-the-ilo/newsroom/news/WCMS_008067/lang--en/index.htm).

Cotton Production Practices. International Cotton Advisory Committee. November 2014. Washington, DC.

"Farming-Child labour in agriculture." International Labour Organization. [http://ilo.org/ipecc/areas/Agriculture/WCMS\\_172416/lang--en/index.htm](http://ilo.org/ipecc/areas/Agriculture/WCMS_172416/lang--en/index.htm).

"ILO: Global Farm Worker Issues - Rural Migration News." International Labour Organization. <https://migration.ucdavis.edu/rmn/more.php?id=785>.

Literature Review and Research Evaluation relating to Social Impacts of Global Cotton Production for ICAC Expert Panel on Social, Environmental and Economic Performance of Cotton (SEEP). International Cotton Advisory Committee. July 2008. [https://www.icac.org/seep/documents/reports/literature\\_review\\_july\\_2008.pdf](https://www.icac.org/seep/documents/reports/literature_review_july_2008.pdf).

Measuring Sustainability in Cotton Farming Systems: Towards a Guidance Framework. Food and Agriculture Organization of the United Nations and International Cotton Advisory Committee. Rome, 2015. <https://www.icac.org/getattachment/cmte-cotton-industry/Social,-Environmental-Economic-Performance-SEEP/Documents/SEEP-FINAL-REPORT-ENGLISH.pdf>.

O'Donoghue, Erik J., Robert A Hoppe, David E. Banker, and Penni Korb. "Exploring Alternative Farm Definitions: Implications for Agricultural Statistics and Program Eligibility." United States Department of Agriculture. <https://naldc.nal.usda.gov/download/55301/PDF>.

"Questions and Answers on forced labour." International Labour Organization. [http://www.ilo.org/global/about-the-ilo/newsroom/news/WCMS\\_181922/lang--en/index.htm](http://www.ilo.org/global/about-the-ilo/newsroom/news/WCMS_181922/lang--en/index.htm).

Survey of Cotton Labor Cost Components in Major Producing Countries. International Cotton Advisory Committee. April 2012. [https://www.icac.org/wp-content/uploads/2012/04/seep\\_labor\\_survey.pdf](https://www.icac.org/wp-content/uploads/2012/04/seep_labor_survey.pdf).

Third Party Monitoring of the use of child labour and forced labour during the Uzbekistan 2015 Cotton Harvest. International Labour Organization. November 20, 2015. [http://www.ilo.org/wcmsp5/groups/public/---ed\\_norm/---ipecc/documents/publication/wcms\\_427620.pdf](http://www.ilo.org/wcmsp5/groups/public/---ed_norm/---ipecc/documents/publication/wcms_427620.pdf).

"What is child labour." International Labour Organization. <http://www.ilo.org/ipecc/facts/lang--en/index.htm>.

Courtesy: Cotton I India 2018 (Domestic)

(The views expressed in this column are of the author and not that of Cotton Association of India)

## CAI Estimates Cotton Crop for the 2017-18 Season at 365 Lakh Bales; Increases the Crop by 5 Lakh Bales from its Previous Month Estimate

Cotton Association of India (CAI) has released its May estimate of the cotton crop for the season 2017-18 beginning from 1st October 2017. The CAI has estimated cotton crop for the ongoing 2017-18 season at 365 lakh bales of 170 kgs. each, which is higher by 5 lakh bales from its previous estimate – 3 lakh bales in Gujarat, 1 Lakh bales in Karnataka, 50,000 bales in Andhra Pradesh & 25,000 bales each in the states of Madhya Pradesh & Tamil Nadu. This estimated increase in production figures is mainly due to the realization of higher yields more particularly in the State of Gujarat. Statements containing the state-wise estimate of the cotton crop and the Balance Sheet for the crop year 2017-18 with the corresponding data for the previous year are given below.

The Statistic Committee of the CAI, in its meeting held yesterday which was also attended by over 30 representative from various upcountry associations, MNCs, Ginners, Exporters, Importers, textile mills, etc, has reviewed the current cotton scenario. The total cotton supply upto 31st May, 2018 has been projected at 378.50 lakh bales which consists of the opening stock of 30 lakh bales at the beginning of the season on 1st October, 2017, the arrival of 340 lakh bales upto 31st May, 2018 and imports which the Committee has estimated at 8.50 lakh bales upto May end. Further, the Committee has estimated cotton consumption for 8 months i.e. from October, 2017 to May, 2018 at 216 lakh bales at an average of 27 Lakh bales per month while the export shipment till 31st May 2018 has been estimated at 62 lakh bales. The stock at the end of May, 2018 is estimated at 100.50 lakh bales including 58 lakh bales with textile mills while the remaining 42.50 lakh bales are estimated to be held with CCI & others (MNCs, Traders, Ginners, etc).

The projected yearly Balance Sheet for the Season 2017-18 drawn by the CAI has estimated total cotton supply till end of the season i.e. upto

30th September 2018 at 410 lakh bales of 170 kgs. each including the opening stock of 30 lakh bales at the beginning of the season. The CAI has estimated domestic consumption for the season at 324 lakh bales while the exports for the season are estimated by the CAI at 70 lakh bales. The carry-over stock at the end of the 2017-18 crop year is estimated at 16 lakh bales.

It may be noted that the crop size of 365 lakh bales of 170 kgs. each is equal to 388 lakh running bales of 160 kgs. each and the estimated arrival of 340 lakh bales 170 kgs. each upto 31st May, 2018 is equal to 362 lakh running bales of 160 kgs. each. Around 93% of the total crop for the season has already arrived in the market upto 31st May, 2018.

### CAI's Estimates of Cotton Crop as on 31st May 2018 for the Seasons 2017-18 and 2016-17

(in lakh bales)

State	Production *		Arrivals as on 31st May 2018 (2017-18)
	2017-18	2016-17	
Punjab	11.00	8.75	10.00
Haryana	24.00	20.50	21.75
Upper Rajasthan	10.00	7.25	9.70
Lower Rajasthan	11.00	9.25	11.00
<b>Total North Zone</b>	<b>56.00</b>	<b>45.75</b>	<b>52.45</b>
Gujarat	108.00	89.00	99.00
Maharashtra	82.00	88.00	79.00
Madhya Pradesh	21.25	20.50	20.50
<b>Total Central Zone</b>	<b>211.25</b>	<b>197.50</b>	<b>198.50</b>

Telangana	51.50	48.00	48.60
Andhra Pradesh	18.50	18.50	16.95
Karnataka	18.50	17.00	17.00
Tamil Nadu	5.25	5.50	2.50
<b>Total South Zone</b>	<b>93.75</b>	<b>89.00</b>	<b>85.05</b>
Orissa	3.00	3.00	3.00
<b>Others</b>	<b>1.00</b>	<b>2.00</b>	<b>1.00</b>
<b>Total</b>	<b>365.00</b>	<b>337.25</b>	<b>340.00</b>

\* Including loose

The Balance Sheet drawn by the Association for 2017-18 and 2016-17 is reproduced below:-

(in lakh bales)

Details	2017-18	2016-17
Opening Stock	30.00	36.50
Production	365.00	337.25
Imports	15.00	27.00
<b>Total Supply</b>	<b>410.00</b>	<b>400.75</b>
Mill Consumption	280.00	265.00
Consumption by SSI Units	29.00	27.00
Non-Mill Use	15.00	15.75
<b>Total Domestic Demand</b>	<b>324.00</b>	<b>307.75</b>
<b>Available Surplus</b>	<b>86.00</b>	<b>93.00</b>
Exports	70.00	63.00
<b>Closing Stock</b>	<b>16.00</b>	<b>30.00</b>

### Balance Sheet of 8 months i.e. from 1.10.2017 to 31.05.2018 for the season 2017-18

Details	(in lakh b/s of 170 kg)	(in '000 Tons)
Opening Stock as on 01.10.2017	30.00	510.00
Arrivals upto 31.05.2018	340.00	5780.00
Imports upto 31.05.2018	8.50	144.50
<b>Total Available</b>	<b>378.50</b>	<b>6434.50</b>
Consumption (27 Lakhs X 8 months)	216.00	3672.00
Export Shipment upto 31.05.2018	62.00	1054.00
Stock with Mills	58.00	986.00
Stock with CCI, MNCs, MCX & Ginners	42.50	722.50
<b>Total</b>	<b>378.50</b>	<b>6434.50</b>

### As per Cotton Association Of India Stock as on 31.05.2018

(Figures in lakh bales of 170 kg.)

State	Ginners	MNC	CCI	MCX	Total
Gujarat	5.45	5.00	0.25	1.00	11.70
North	2.00	4.00	0.00	0.00	6.00
Maharashtra	6.00	5.00	0.15	0.35	11.50
M.P.	1.75	0.25	0.15	0.00	2.15
Telangana	2.00	4.00	1.00	0.25	7.25
Karnataka	0.50	0.75	0.40	0.00	1.65
A.P.	1.25	1.00	0.00	0.00	2.25
<b>Total</b>	<b>18.95</b>	<b>20.00</b>	<b>1.95</b>	<b>1.60</b>	<b>42.50</b>

UPCOUNTRY SPOT RATES							(Rs./Qtl)					
Standard Descriptions with Basic Grade & Staple in Millimetres based on Upper Half Mean Length [ By law 66 (A) (a) (4) ]							Spot Rate (Upcountry) 2017-18 Crop JUNE 2018					
Sr. No.	Growth	Grade Standard	Grade	Staple	Micronaire	Strength /GPT	11th	12th	13th	14th	15th	16th
1	P/H/R	ICS-101	Fine	Below 22mm	5.0-7.0	15	12232 (43500)	12317 (43800)	12373 (44000)	12513 (44500)	12598 (44800)	12598 (44800)
2	P/H/R	ICS-201	Fine	Below 22mm	5.0-7.0	15	12373 (44000)	12457 (44300)	12513 (44500)	12654 (45000)	12738 (45300)	12738 (45300)
3	GUJ	ICS-102	Fine	22mm	4.0-6.0	20	8380 (29800)	8323 (29600)	8408 (29900)	8436 (30000)	8464 (30100)	8464 (30100)
4	KAR	ICS-103	Fine	23mm	4.0-5.5	21	9898 (35200)	9842 (35000)	9926 (35300)	9926 (35300)	9926 (35300)	9926 (35300)
5	M/M	ICS-104	Fine	24mm	4.0-5.0	23	10742 (38200)	10686 (38000)	10770 (38300)	10770 (38300)	10826 (38500)	10826 (38500)
6	P/H/R	ICS-202	Fine	26mm	3.5-4.9	26	12823 (45600)	12823 (45600)	12879 (45800)	12907 (45900)	12963 (46100)	12851 (45700)
7	M/M/A	ICS-105	Fine	26mm	3.0-3.4	25	9983 (35500)	9926 (35300)	10067 (35800)	10095 (35900)	10123 (36000)	10067 (35800)
8	M/M/A	ICS-105	Fine	26mm	3.5-4.9	25	10882 (38700)	10826 (38500)	10882 (38700)	10939 (38900)	10967 (39000)	10882 (38700)
9	P/H/R	ICS-105	Fine	27mm	3.5-4.9	26	12935 (46000)	12935 (46000)	12991 (46200)	13020 (46300)	13076 (46500)	12963 (46100)
10	M/M/A	ICS-105	Fine	27mm	3.0-3.4	26	10432 (37100)	10376 (36900)	10517 (37400)	10545 (37500)	10629 (37800)	10545 (37500)
11	M/M/A	ICS-105	Fine	27mm	3.5-4.9	26	11304 (40200)	11248 (40000)	11389 (40500)	11445 (40700)	11473 (40800)	11360 (40400)
12	P/H/R	ICS-105	Fine	28mm	3.5-4.9	27	12991 (46200)	12991 (46200)	13048 (46400)	13104 (46600)	13160 (46800)	13048 (46400)
13	M/M/A	ICS-105	Fine	28mm	3.5-4.9	27	11979 (42600)	11923 (42400)	12007 (42700)	12063 (42900)	12092 (43000)	12007 (42700)
14	GUJ	ICS-105	Fine	28mm	3.5-4.9	27	12598 (44800)	12541 (44600)	12626 (44900)	12766 (45400)	12851 (45700)	12738 (45300)
15	M/M/A/K	ICS-105	Fine	29mm	3.5-4.9	28	12766 (45400)	12710 (45200)	12795 (45500)	12879 (45800)	12879 (45800)	12766 (45400)
16	GUJ	ICS-105	Fine	29mm	3.5-4.9	28	13048 (46400)	12991 (46200)	13076 (46500)	13216 (47000)	13244 (47100)	13160 (46800)
17	M/M/A/K	ICS-105	Fine	30mm	3.5-4.9	29	13048 (46400)	12991 (46200)	13132 (46700)	13188 (46900)	13216 (47000)	13104 (46600)
18	M/M/A/K/T/O	ICS-105	Fine	31mm	3.5-4.9	30	13216 (47000)	13160 (46800)	13301 (47300)	13385 (47600)	13413 (47700)	13385 (47600)
19	A/K/T/O	ICS-106	Fine	32mm	3.5-4.9	31	13469 (47900)	13413 (47700)	13554 (48200)	13610 (48400)	13694 (48700)	13666 (48600)
20	M(P)/K/T	ICS-107	Fine	34mm	3.0-3.8	33	16647 (59200)	16591 (59000)	16675 (59300)	16731 (59500)	16844 (59900)	16788 (59700)

(Note: Figures in bracket indicate prices in Rs./Candy)